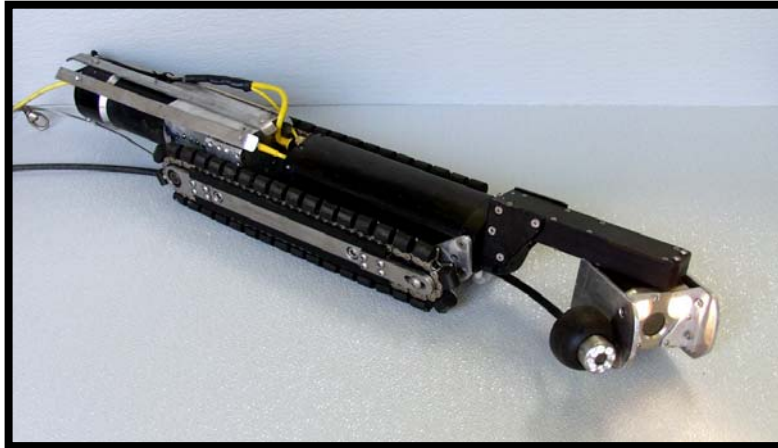


## Lateral Inspection System



---

---

**The Lateral Inspection System enables operators to simultaneously perform mainline and lateral inspections from a single, fully integrated unit. The systems utilizes a *picture in picture* format allowing operators to view mainline inspections as well as launch into and inspect adjacent lateral lines.**

**The system can inspect mainlines from 8"- 24" and lateral lines from 4"- 8". The lateral camera launches, extends and retracts at a maximum speed of 30' per minute.**

**The unit incorporates two high-resolution color cameras and is self-propelled by an R.S.T. Tread Drive Crawler. This system is capable of lateral inspections up to 100' at a distance of up to 1,000' from a manhole or other entry point. A single auxiliary desktop controller operates both cameras and the crawler transporter unit.**

**The system incorporates the all features of the durable Omni Eye III Zoom Mainline camera. The Lateral Inspection Mini Camera features a high-resolution picture and mechanical auto-leveling.**

# LATERAL INSPECTION SYSTEM

## MAINLINE INSPECTIONS

**Minimum Pipeline Size:** 8"  
**Maximum Pipeline Size:** 24"  
**Maximum Pipeline Length:** 1,000' (depending on pipe conditions)  
**Maximum Speed:** Up to 70' per minute

## LATERAL INSPECTIONS

**Minimum Pipeline Size:** 4"  
**Maximum Pipeline Size:** 8"  
**Maximum Pipeline Length:** 100' (depending on pipe conditions)  
**Maximum Speed:** Up to 30' per minute

## DESIGN INFORMATION

**Power Requirement:** 70 – 130 volts dc  
**Motor Type:** 1/4 horsepower  
**Drive Type:** 18.5:1 right angle gearbox internal gear train  
**Drive System:** Double riveted tread drive  
**Speeds:** Three forward, one reverse, stop and freewheel  
**Lateral Drive:** Tractor motor driven, lateral camera cable pushers via a clamping, belt drive push system

## PHYSICAL INFORMATION

**Height:** 5.5"  
**Length:** 37"  
**Width:** 6.5"  
**Weight:** 55 lbs.  
**Construction:** Aircraft Milspec 6061 aluminum protected by corrosion-resistant powder coat and anodizing; brass and stainless steel.

## ADDITIONAL INFORMATION

Cable reel w/ up to 1,000' of steel armored, single conductor cable & 100' of push cable  
Omni Eye III Zoom color camera head for mainline inspections  
Mini mainline camera with mechanical up-righting picture for lateral inspections  
On screen display of mainline and lateral footage  
Picture in picture for mainline and lateral viewing  
Single auxiliary desktop controller



1327 Clegg Street  
Petaluma, CA 94954

292 Midland Trail  
Mt. Sterling, KY 40353

800.767.1974 or 707.778.1974  
Fax. 707.778.1981

[www.rstechserv.com](http://www.rstechserv.com)

**Indian River Equipment Company**  
**2111 Smith Avenue**  
**Chesapeake, Virginia 23320**  
**(757) 424-5656**